

# MUSICAL LEGO

The New Era of Musical LEGO

Adnan Asim, Emily Becker  
Fahad-Ur-Rehman, Muhammad Umar

# MAIN IDEA

Creating a wireless sensor-based LEGO-Kit that is connected to an App, which produces sound according to the color-structure of the LEGO's.

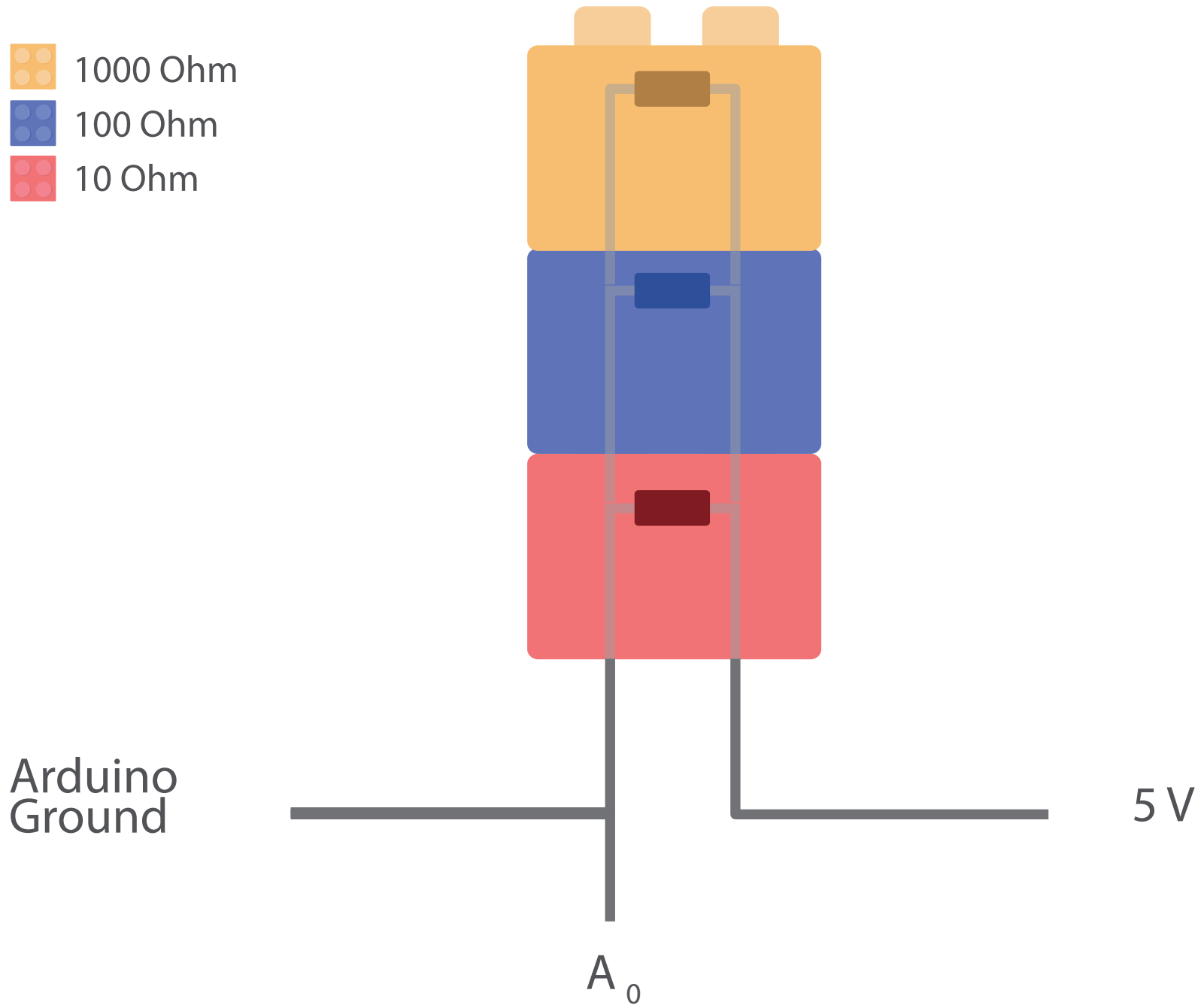
# CONCEPT

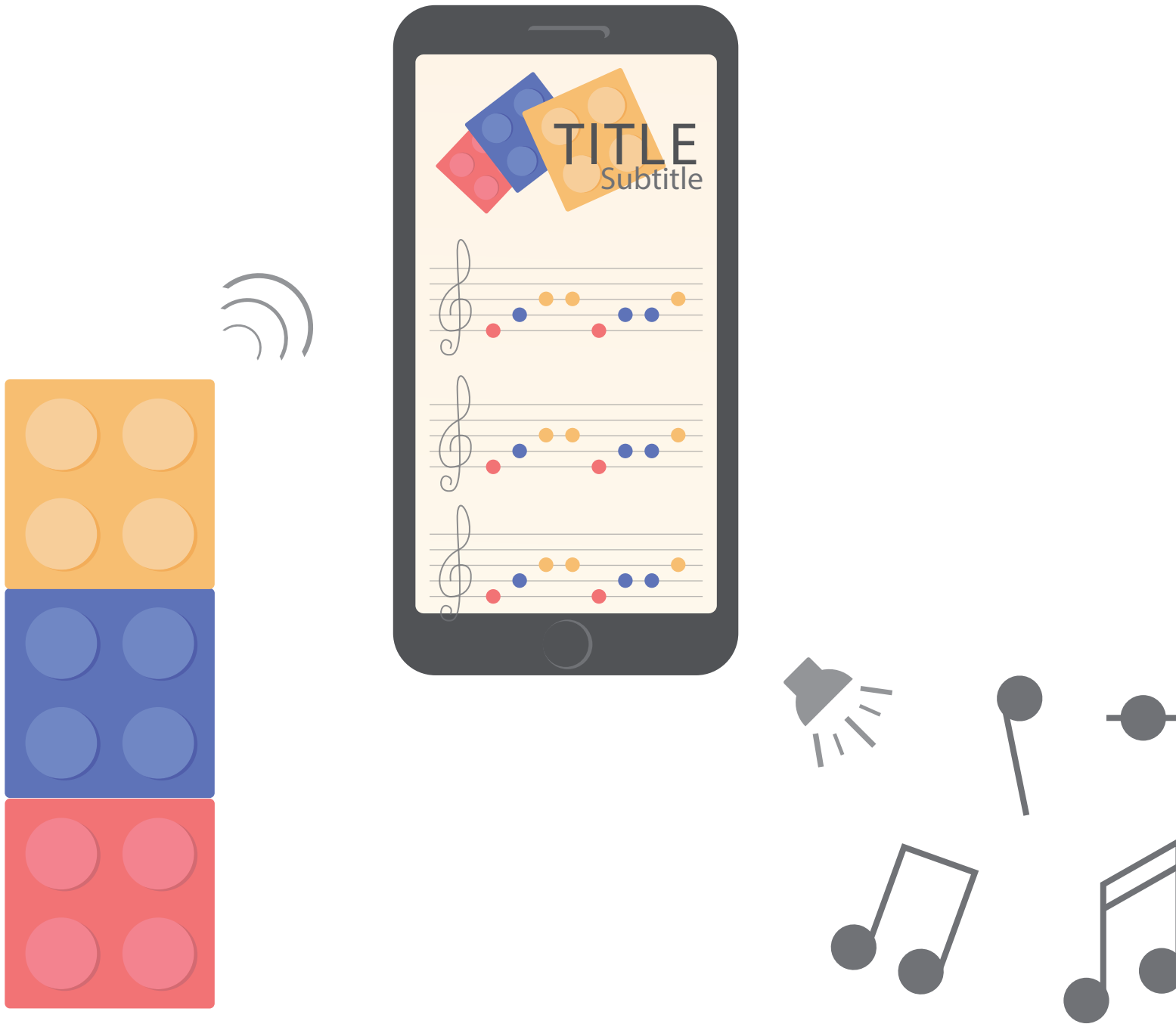
- Motherboard equipped with sensors to detect color
- Arduino receives data from motherboard
- Data will be sent to App
- App produces a melody

# CONCEPT

- Breadboard is attached to Arduino Ground and 5V battery
- Resistors are implemented within bricks in a parallel circuit
- Each color contains a different value of resistance
- Analog reading determines total value of resistance
- Arduino converts data into color-code
- App receives color code and produces melody

- 1000 Ohm
- 100 Ohm
- 10 Ohm





THANK YOU !